



Angle Steel 330KV High Voltage Electric Transmission Tower

Mao Tong is a leading China Angle Steel 330KV High Voltage Electric Transmission Tower manufacturers, suppliers and exporter. Angle steel tower, quadrilateral truss structure transmission line tower, using Q345B Q235 high quality steel as the main material of the tower body, rigid structure, small deformation.

Product Description

Mao Tong is China manufacturers & suppliers who mainly produces Angle Steel 330KV High Voltage Electric Transmission Tower with many years of experience. Qingdao Maotong electric power equipment Co., Ltd. is specialized in producing all kinds of transmission line tower, angle steel 330kv high voltage electric transmission tower, broadcast communication tower, steel tower mast and all kinds of steel structure products. Our products have good price and good reputation all the time from abroad European and American Southeast Asia and Africa.

The Maotong Company column material of Angle Steel 330KV High Voltage Electric Transmission Tower is seamless steel tube, which has a small wind load coefficient, but strong wind resistance. Practical outer flange connected tower, bolt tensile resistance is strong, not easy to damage, its maintenance cost is greatly reduced.

Angle Steel 330KV High Voltage Electric Transmission Tower with the design of regular triangular tower, the steel consumption is reduced, the land area is not large, which effectively saves the land resources, and can be more flexible to choose the location. Angle steel tower light weight, can be easily placed or transported, the construction cycle is relatively short, these are the basic advantages of Angle steel tower.

Angle Steel 330KV High Voltage Electric Transmission Tower:

Angle steel tower, quadrilateral truss structure transmission line tower, using Q345B Q235 high quality steel as the main material of the tower body, rigid structure, small deformation;

Angle steel splicing connection, light weight parts, manual handling and installation, low project cost. The tower body can carry 6 layers of platform, each layer of platform can hang 6 antennas.

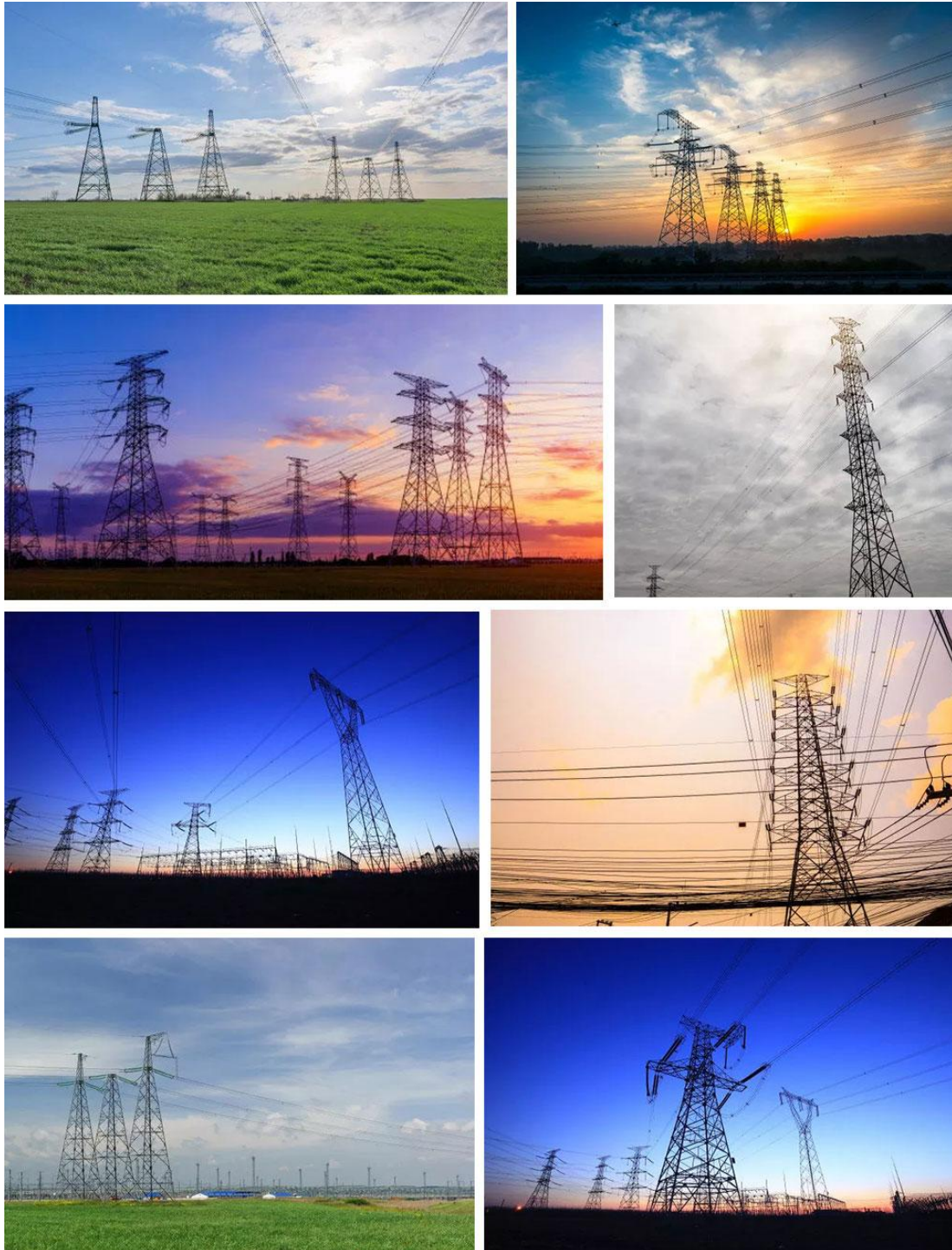
Angle Steel 330KV High Voltage Electric Transmission Tower Main features:

It is mainly suitable for the construction of stations in areas where machinery and large vehicles cannot reach, such as mountains, suburbs, urban and rural combined zones, roads



and railways.

Draw lessons from the developed countries of the Angle steel tower manufacturing process, adopts the seamless steel tube production the pillar of the material, the greatest degree of reducing the weight of the Angle steel tower, reduces the area with the manufacturing cost, transportation and maintenance costs are greatly reduced, the Angle steel tower today compared with the domestic traditional Angle steel tower in various aspects have greatly improved performance, customers can rest assured the choose and buy friends.





Qingdao Mao Tong Power Equipment Co., Ltd.

www.carelite.net

Please Notice

Why do you choose maotong products?
Professional Supplier, Quality be Promised,Customize Support,Good Service

Directly profits to the buyers, because we are manufacturers

Phone/Whatsapp:
+8615726262672
8613668856550

